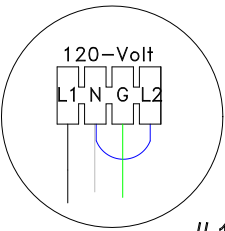
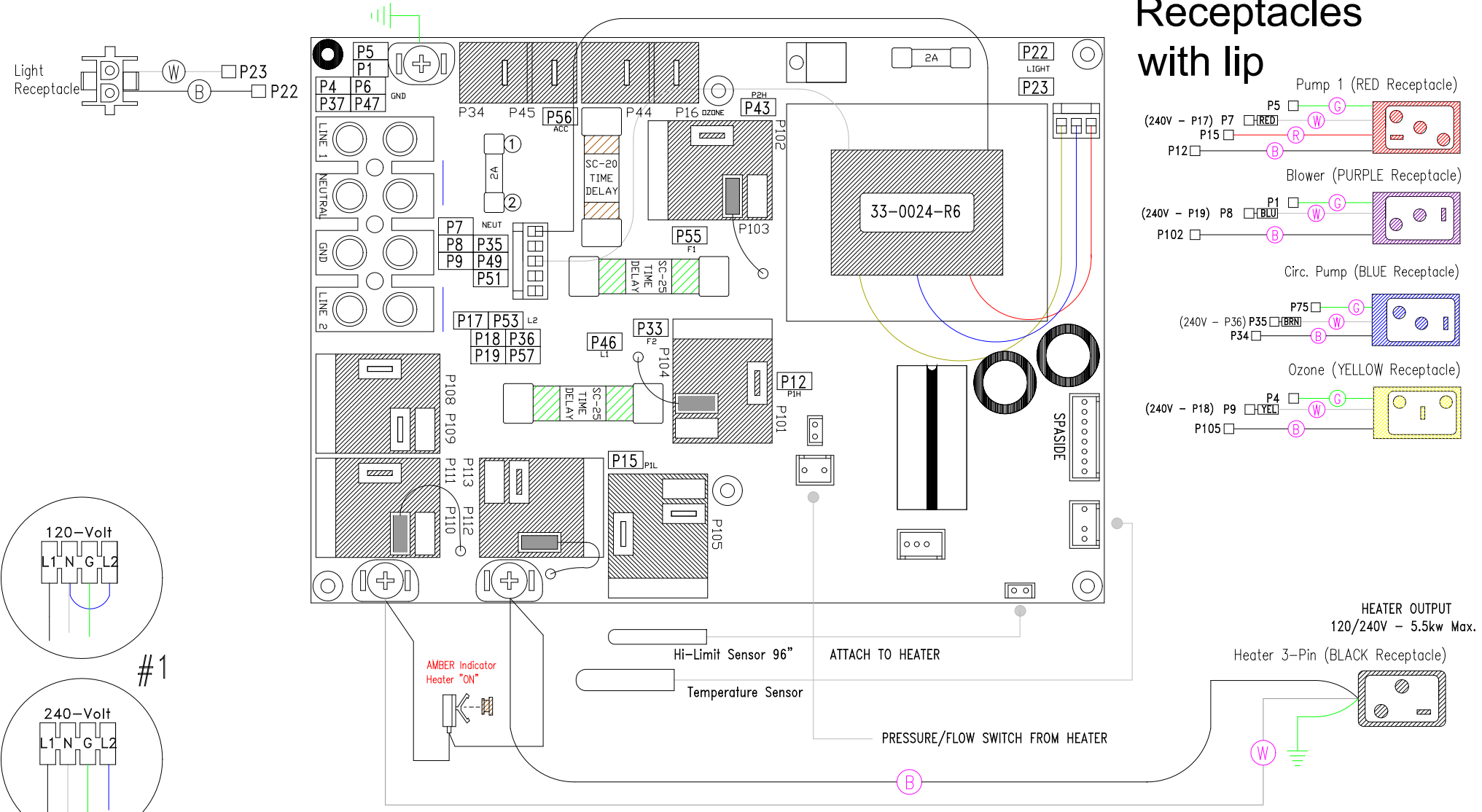
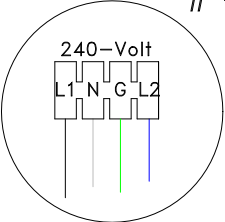


Receptacles with lip



#1



| LEGEND | |
|--------|--------------------------------|
| | - 1/4" QUICK CONNECT |
| | - 1/4" QUICK CONNECT PIGGYBACK |
| | - FORK CONNECTOR |
| | - RING CONNECTOR |
| | - SOCKET CONNECTOR |
| | - PIN CONNECTOR |

Manufacture Notes:

#1: Line 2 and Neutral must be jumpered for 120V service

| Drawn | Rev | Wire Color Code | |
|-------------|----------|-----------------|------------|
| MBS | 02 | B - Black | G - Green |
| Date | 04.16.10 | Br - Brown | Bl - Blue |
| Diagram No. | 6838 | R - Red | V - Violet |
| | | O - Orange | W - White |
| | | Y - Yellow | Gr - Gray |